

Blinds

Our Inspired Pelmet range is designed to be used inside and outside the recess, creating a more decorative finish.

- Can cover tracks and most blinds.
- Available for inside or outside a recess.
- Made to your exact length requirements.
- All pelmets over 275cm will come with a join.
- Outside recess pelmets are supplied with returns and top board. (Please specify the return depth when ordering.)
- Visit www.thepelmetcompany.co.uk for more information.



Pelmet inside the recess



Blind shown inside the recess - can look uneven when attached by velcro.



Using Inspired Pelmets the blind inside the recess looks more decorative.

Pelmet outside the recess



When hung outside the recess the mechanisms can often be seen and can spoil the look of the blind.



The Inspired Pelmet covers the top of the blind hiding the mechanism and creating a more pleasing effect.

Inspired Pelmets



195

For Blinds

Price Band A



Manhattan- Gunmetal Finish

Montpellier



Black
Silver



Gold
Walnut

Cadiz

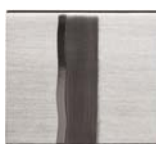


Silver



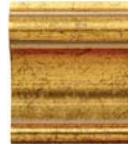
Gold***

Manhattan



Gunmetal

Florence



Gold



Price Band B



Malmo - Pewter/Silver Finish

Malmo



Pewter
Silver



Sterling
Silver



Black
Silver



Black

Tumba



Steel

Vigo



White



Black



Chrome

Limoges



Crackle
Light Gold

Lexington



Black



Chrome

Toulon



Antique Black

Rimini



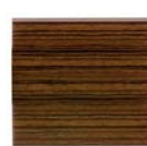
Antique Ivory



Dark Grey***



Dark Walnut ***



Light
Walnut***

Price Band C

Metz



Gold



Silver

Tivoli



Gold

Monza



Distressed
Silver

Rouen



Highlighted
Gold

Price Band D

Chateau



Gold

***To be discontinued - check stock before ordering

Blinds

Made to Measure Blinds

We offer an extensive range of made to measure blinds and have a supporting range of fobs and folders. Price lists are available on request.

Please contact Emily in our blind department for further information -
email: custom.made@price-regency.co.uk or telephone 01273 421999

Blinds

Salsa Teal - Vertical Blind



Redwood - Wood Venetian Blind



Latte Bathroom Blind



Ellipse Blue - Roller Blind



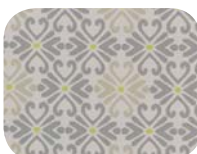
Huckleberry Teal Roller Blind



Grey - Wood Venetian Blind



Montezuma - Roller



Fryers Stripe - Roller Blind



Itsy Pink Blackout - Roller Blind



Alder White - Wood Venetian Blind



Meridian Blinds

The Meridian made to measure roller blind collection from JAB ANSTOETZ has 67 designs, and 240 colours. Blinds with a metal chain are offered as standard, and an easy-to-use combination of chain and spring-type mechanism are available. Widths up to 320cm

The 67 decorative designs are featured on 34 cards in a presentation box. The designs include fashionable plains and semi-plains in numerous colours, stripe designs and flame retardant blinds

Please contact Emily in our blind department for further information - email: custom.made@price-regency.co.uk or telephone 01273 421999



Mood



Hula CS



Balloons



Loire



Moon



City Lights



Stromboli



Shiny 75



Amazonica



4905 Colorama Blinds



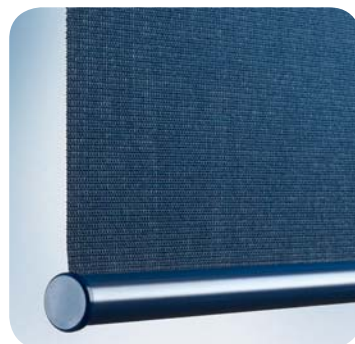
Silent Gliss 4905 made to measure Colorama blinds are small trendy and colourful. The system features elegant brackets, a slim tube and a discreet bottom bar.

There are 27 fabric colours (including silver) and 27 hardware colours ensuring that the fit with any interior design scheme.

Side guides are available for sloped situations and those blind exposed to heavy ventilation or wind. The system can be simply clicked into the brackets for quick and easy installation.

Please contact Kevin for further information -

email: kevin@price-regency.co.uk or telephone 01273 421999



Shutter Collection

Shutters are a stylish and versatile option for windows as they come in a range of colours and can be made to fit any size window or door. Available in 5 shutter styles and 117 painted and stained finishes and colours. Shutters can also be painted to match your colour scheme opting for one of thousands of custom colours.

Please contact Emily in our blind department for further information -
email: custom.made@price-regency.co.uk or telephone 01273 421999

Marchwood



Groverwood Crisp Linen



Groverwood New Ebony



Hingel



Groverwood Silk White



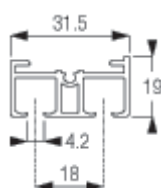
Groverwood - Custom Coloured



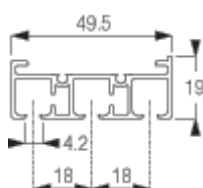


- Decorative Panel Glide System for residential and contract applications
- A unique system of two or more sliding panels for use as a window treatment, wall dressing or as a room divider
- Quiet and smooth operation
- A wide range of fabrics available
- Single, centre, pair stack or unconnected
- Operating Methods: hand, cord or electric
- Easy ceiling or wall fix to all surfaces
- The system cannot be bent
- Panels can be easily removed for cleaning or to change decor
- Choice of carriers: aluminium or transparent. Both available with rollers or as click-in option
- Delivered ready assembled

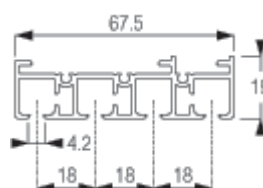
Channel Profiles:



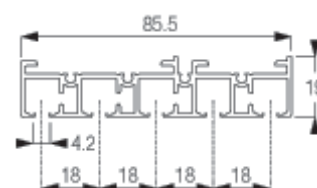
10122 - 2 Channel Profile



10123 - 3 Channel Profile



10124 - 4 Channel Profile



10125 - 5 Channel Profile

Cannot be bent.

Each system is built up from the four different profiles available.

Cord operated systems must incorporate profile 10123, 10124 or 10125.

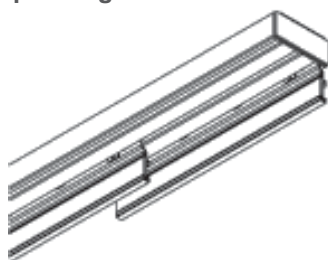
The maximum system width depends mainly on the operation method and the overall fabric weight.

For hand operated (unconnected panels), the system length is unlimited. Hand operated with draw rod (connected panels) or cord operated

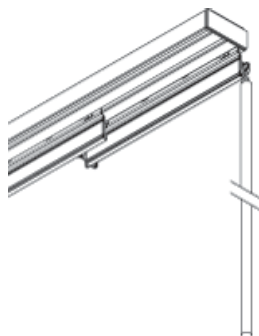
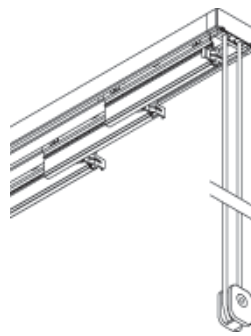
systems (connected panels) should not exceed a total system length of 6m.

The maximum drop of the system should not exceed 4m.

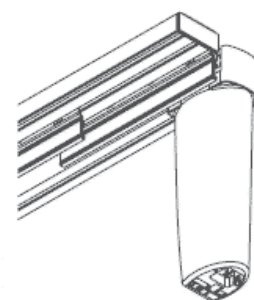
Operating Methods:



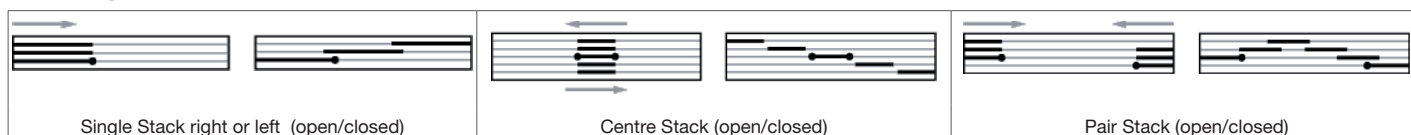
Hand Operated (Unconnected Panels)

Hand Operated by Draw Rod
(Connected Panels)

Cord Operated (Connected Panels)

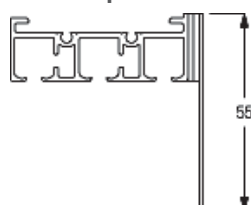
Electrically Operated (with system
5400)

Stacking Variations:



Other variations are possible. Distance between all profiles = 4mm

Fascia Option:



The fascia option allows you to cover the profile and workings of the system.

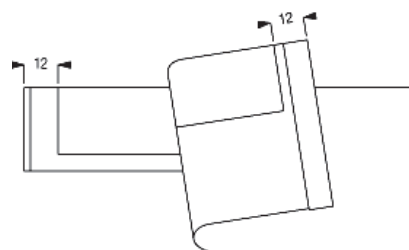
The fascia components are:

10399 Fascia

10398 Magnetic tape for fascia

10396 End cap for fascia

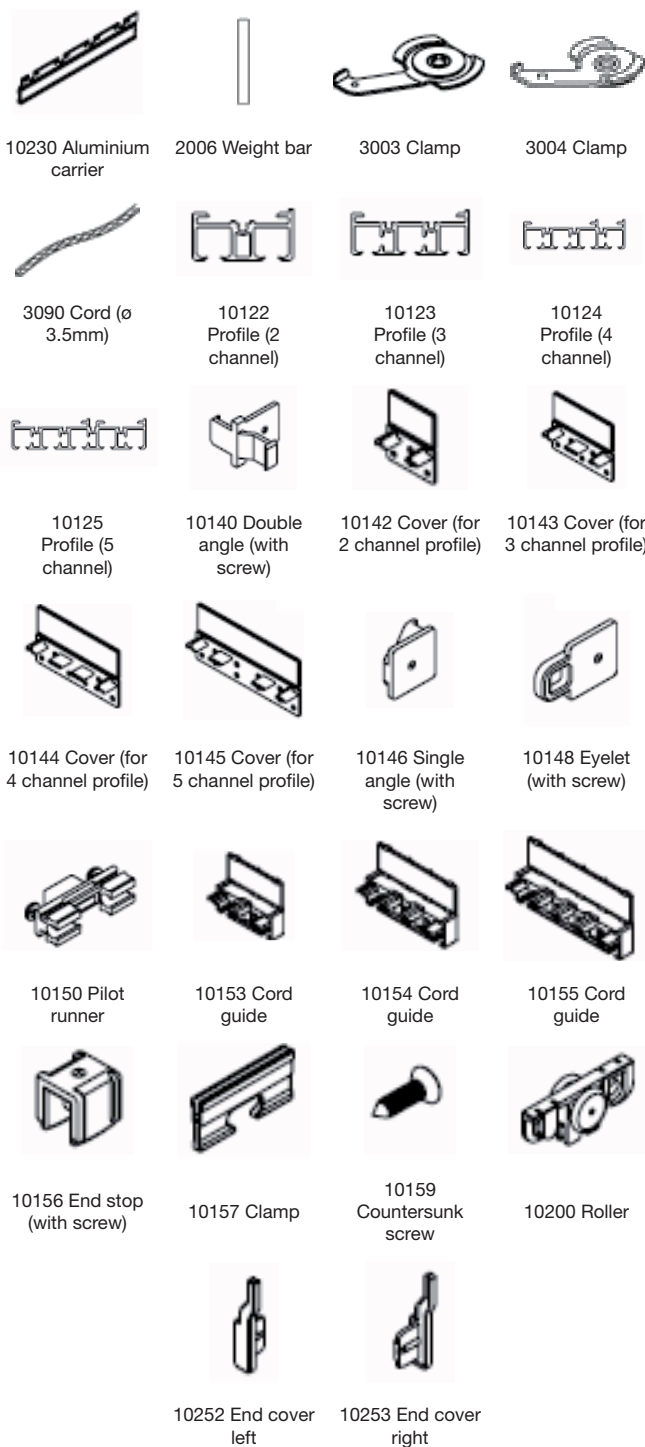
Fascia height is 55mm.



Distance from magnetic tape
10398 to the end of profile /
fascia is 12mm.



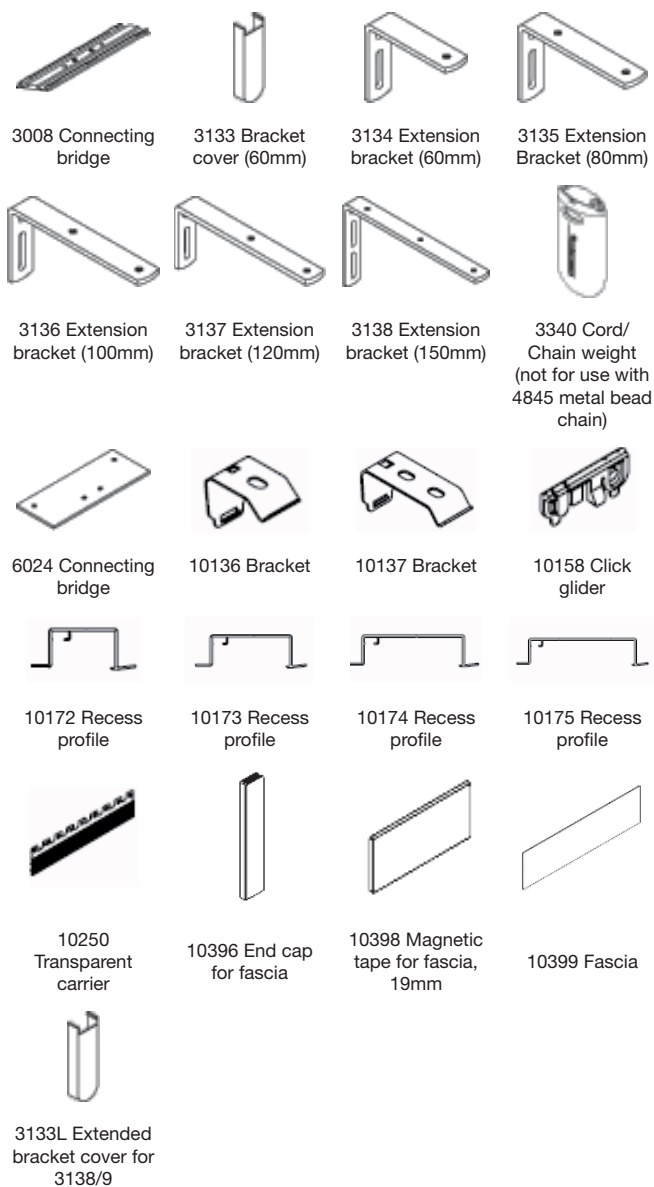
Standard Accessories



- 10430 Draw rod with hook, 50cm
- 10431 Draw rod with hook, 75cm
- 10432 Draw rod with hook, 100cm
- 10433 Draw rod with hook, 125cm
- 10434 Draw rod with hook, 150cm

Please contact us for further information on panel designs and alternative Silent Gliss sliding panel options.

Optional Accessories



Sleeping Rose panel design

This beautiful Hemisphere panel glide range presents extraordinary creations consisting of attractive panel fabrics as well as two versatile rail systems.

As well as classic plains and plain black-out panels Hemisphere also contains patterned panels and a range of 160 fascinating colours.

A box including brochures and all designs is available
 code PM3020-040

Please contact Emily in our blind department for further information
 - email: custom.made@price-regency.co.uk or telephone 01273 421999



Tabori F1



Luce



Planet Vita F1



Opus Tess



View F1



Fortuna



Vita Ruche

Made To Measure Curtains & Roman Blinds

A comprehensive range of made to measure curtains and Roman Blinds is now available.

All Roman blinds are fully lined and come with the option of blackout, interlining and FR Lining as well as a standard lining and are compliant to BA EN 13120:2009+a1:2014

Curtains are offered with pencil pleat, pinch pleat or eyelet headings and can be lined as standard or with thermal, blackout or FR lining.

Cushion covers, valances and tiebacks are also available.

The sample book code is - M2MROMANB

Please contact Emily in our blind department for further information -

email: custom.made@price-regency.co.uk or telephone 01273 421999

Inca Flame Roman Blind



Joplin Plum Curtain and Tieback



Curtain Eyelet Heading



Cathy Chintz Roman Blind



English Rose Curtains with Classic Stripe Roman Blind - Dove Grey



Motor Madness Roman Blind



Camelia Red Curtain with Sheba Red Roman Blind

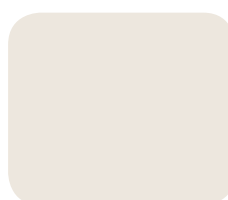




Jet Black - JB



Mushroom - MU



Almond - AL



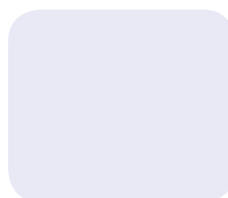
Postbox Red - PR



Dusky Rose - DR



Apple Green - AG



Snow White - SW



Charcoal - CH



Midnight Blue - MB



Grape - GR



Sea Green - SG



Citrus Zest - CZ



Chocolate - CL

Plain Roller Blinds

170cm Drop	
60cm	UN60170RBD/
90cm	UN90170RBD/
120cm	UN120170RBD/
150cm	UN150170RBD/
180cm	UN180170RBD/

Blackout Roller Blinds

170cm Drop	
60cm	UN60170RBB/
90cm	UN90170RBB/
120cm	UN120170RBB
150cm	UN150170RBB
180cm	UN180170RBB

Due to the limitations in the printing process colours may vary.

25mm Cordless Aluminium Venetian Blinds

Ready Mades

Swish

205



Polar White - PW



Cocoa Butter - CB



Brush Aluminium - BA



Brushed Bronze - BB



Champagne - CH



Piano Black - PB



Berry Berry - BER



Matching Headrail



Bottom controls

25mm Cordless Aluminium Venetian Blinds

	120cm Drop	180cm Drop
0.60m	SWBCA60/120.	SWBCA60/180.
0.75m	SWBCA75/120.	SWBCA75/180.
0.90m	SWBCA90/120.	SWBCA90/180.
1.05m	SWBCA105/120.	SWBCA105/180.
1.20m	SWBCA120/120.	SWBCA120/180.
1.35m	SWBCA135/120.	SWBCA135/180.
1.50m	SWBCA150/120.	SWBCA150/180.
1.65m	SWBCA165/120.	SWBCA165/180.
1.80m	SWBCA180/120.	SWBCA180/180.

Part of the Cordless programme from Swish. More exciting ranges due Spring 2016

Blinds

25mm Venetian Blinds

Ready Made

25mm Aluminium Venetians



Cream - C



White - X



Silver - SV

25mm Aluminium Venetian Blinds	
160cm Drop	
0.45m	EBAL/045.
0.60m	EBAL/060.
0.75m	EBAL/075.
0.90m	EBAL/090.
1.05m	EBAL/105.
1.20m	EBAL/120.
1.50m	EBAL/150.
1.80m	EBAL/180.

25mm PVC Venetians



Black - BK



Cream - C



Wood Effect - WDE



White - X

25mm PVC Venetian Blinds	
160cm Drop	
0.45m	EBPV/045.
0.60m	EBPV/060.
0.75m	EBPV/075.
0.90m	EBPV/090.
1.05m	EBPV/105.
1.20m	EBPV/120.
1.50m	EBPV/150.
1.80m	EBPV/180.

Blinds



Prestige Cord Operated Headrail System



- Aluminium headrail with velcro fascia for easy blind fixing.
- Standard cord loop.
- Cord lock mechanism for precise operation.
- Maximum blind weight = 3.0 kilograms

Cord Operated Headrail System			
Width	Universal Brackets	Cord Guides	Part Number
90cm	2	3	PRECRD90
120cm	2	3	PRECRD120
150cm	3	4	PRECRD150
180cm	3	5	PRECRD180

This Prestige Cord Operated headrail system is compliant to BA EN 13120:2009+a1:2014 using the following method of make up:

Please remember that this method only applies when the distance between the rod pockets is more than 20cm. Breakaways on the cords at the back of the blind are not needed for blinds made with rod pockets 20cm apart or less.



Components used:

The cord, toggles, cable ties, cleat, cord breakaway and transparent rings needed to make a compliant blind are supplied with the headrail system.



Please note:

- The cord must pass through the rings unhindered.
- The toggle is attached to the bottom ring with a cable tie. This prevents the toggle falling off the blind and causing a choke hazard.
- The cord must remain unknotted or secured at the bottom so that it can pass through both the toggle and the rings



Certificate of compliance available on request.



All head rails are supplied with the relevant blind safety labels. These are also sold separately - see our price list for more information.

Prestige Cord System Additional Fittings



Aluminium Rail with Hook Profile
3mtr - RBT131



Track End Cover (White)
per 10 - RBT137



Universal Bracket Standard
35mm projection
per 10 - RBT133



Universal Bracket Long
50mm Projection
per each - RBT134



Universal Bracket Extra
Long 80mm
Projection
per each - RBT135



Cord Guide
per 10 - RB346



For Touch and Close tape
see page 253



Cord Lock
ea - RBA343



Cord
1.5mm - 200mtr - RBC200
2.5mm - 200mtr - 6a



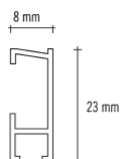
Clear Cleat
ea - RBA501



Cord Connector Breakaway
ea - RBA500

Prestige Blind Systems

Prestige Chain Operated Headrail System



All head rails are supplied with the relevant blind safety labels. These are also sold separately - see our price list for more information.



Certificate of compliance available on request.

- Aluminium headrail with velcro facia for easy blind fixing.
- Toughened beaded chain loop (white plastic)
- Blind tape cassettes for improved performance/control
- Maximum blind drop 2.6mtr
- Maximum blind weight 4.6 kilograms
- Standard Chain Drop 1mtr (2mtr loop)
- 3:1 ratio
- Chain breakaway RBA503 available to enable the chain to be 60cm from the floor.
- 20cm chain available to buy separately.

Chain Operated Headrail System

Width	Universal Brackets	Internal Cord Take up Reels	Part Number
90cm	2	3	PRECHN90
120cm	2	3	PRECHN120
150cm	3	4	PRECHN150
180cm	3	4	PRECHN180

Prestige Chain System Additional Fittings



Aluminium Rail with Hook Profile
3mtr - RBT131



Track End Cover (White)
per 10 - RBT137



Universal Bracket Standard
35mm projection
per 10 - RBT133



Universal Bracket Long
50mm Projection
per each - RBT134



Universal Bracket Extra
Long 80mm Projection
per each - RBT135



Chain Control Guide
ea - RBA442



Aluminium Axis Bar
5mtr - RBA459



Axis Locking Guide
ea - RBA451



Tape Cassette (including
tape and bottom clip.)
ea - RBA447



Chain breakaway - 1:4 ratio
ea - RBA503 request continuous chain separately
The top chain, which passes through the mechanism is only available as a white plastic chain.



R Clip
ea - RBA502



For Touch and Close tape
see page 253



Standard chain operated
headrail system chain
tensioner. - RBA463
supplied with the headrail



White Plastic Chain Continuous Loop

0.4mtr	= 20cm drop	CHAIN20
2mtr	= 1mtr drop	CHAIN200
2.5mtr	= 1.25mtr drop	CHAIN250
3mtr	= 1.50mtr drop	CHAIN300
3.5mtr	= 1.75mtr drop	CHAIN350
4mtr	= 2mtr drop	CHAIN400



Metal Bead Chain Continuous Loop

0.4mtr	= 20cm drop	METAL20
2mtr	= 1mtr drop	METAL200
2.5mtr	= 1.25mtr drop	METAL250
3mtr	= 1.50mtr drop	METAL300
3.5mtr	= 1.75mtr drop	METAL350
4mtr	= 2mtr drop	METAL400

Chain Operated Headrail Systems are available cut to size. Please check for lead times.

Prestige Chain Operated Headrail System

This Prestige Chain Operated headrail system is compliant to BA EN 13120:2009+a1:2014 using the following methods of make up:

Please remember that these methods only apply when the distance between the rod pockets is more than 20cm. Breakaways on the cords at the back of the blind are not needed for blinds made with rod pockets 20cm apart or less.

Version1:



Components used:

- Eyelets - code 542420
- Toggles - code RBA455
- ROUND BAR

Eyelet Method.

The bottom toggle must be attached to the blind, we suggest a loop of blind cord sewn into the rod pocket and then knotted above the sewing line. This prevents the toggle from falling off the blind and becoming a choking hazard.

The cord that runs down the length of the blind through the eyelets must not be knotted at the bottom. This enables the cord to pass through the eyelets when 6kg of weight is applied.

Version2:



Components used:

- Ring Clip - code RBA457
- Toggles - code RBA455
- ROUND BAR

Ring Clip Method:

This method can either be created with roman blind tape PRT672 or by making rod pockets in the lining of the blind.

In this instance the cord that runs through the ring clips must be knotted at the bottom, after it has passed through the toggle. This prevents the toggle from becoming a choking hazard when the clips come apart if 6kg of weight is applied in the loops.

Version3:



Components used:

- Tape Clip - RBA458
- Toggles - code RBA455
- ROUND BAR
- Roman blind tape - 672

Tape Clip Method:

The part of the clip that the cord/ tape runs through will come apart from the main clip is a weight on 6kg is applied to the loops at the back of the blind. The cord must then pass through the toggle and be knotted so that the toggle does not fall off and become a choking hazard.



Version4:



Components used:

- Toggles supplied with the headrail - code RBA455
- ROUND BAR
- Rings - supplied with the headrail - code RBA207
- Cable ties - supplied with the headrail

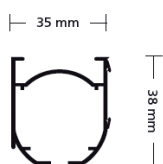
This is the standard method and the cable ties, toggles and rings are supplied in the pack.

Rings are sewn into the rod pocket or tape and the cord runs through them the length of the blind. On the bottom ring a cable tie is used to attach the toggle to the ring. The cable tie and the cord pass through the toggle.

The cord must not be knotted at the bottom because it needs to pass through all of the rings and the toggle if a weight of 6kg is applied to the loops at the back of the blind.

Please remember when fitting the blind operating chain must not be less than 1.5cm from the floor without a breakaway. Our ready made blind systems are supplied with a 1mtr chain drop. If your blind needs a shorter or longer drop please order separately.

Standard Chain Operated Headrail System



- Streamlined headrail with encased mechanisms
- Velcro fascia for easy attachment of blind
- Toughened beaded chain loop (white plastic)
- Maximum blind drop 3.5mtr
- 1:1 gear ratio - 6kg maximum
- Standard chain drop 1mtr (2mtr loop)
- 35mm projection including brackets.
- Comes with a standard continuous chain and chain tensioner.
- 1:1 Chain breakaway device is available code VBA106. An alternative 2 part chain breakaway is available code RBA503 with a continuous chain - see below. Both breakaway devices enable the chain to drop to 60cm from the floor.
- Sold in standard sizes only - for made to measure see the Ultra system on pages 212-213
- The headrail is supplied with the components listed in version 4 of the make up guide.



All head rails are supplied with the relevant blind safety labels. These are also sold separately - see our price list for more information.



Certificate of compliance available on request.

Standard Chain Operated Headrail System

Width	Universal Brackets	Internal Cord Take up Reels	Part Number
60cm	2	2	VBR60
100cm	3	3	VBR100
140cm	3	4	VBR140
180cm	4	5	VBR180
250cm	5	6	VBR250

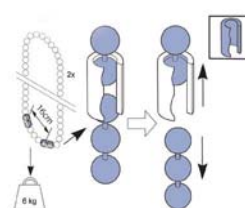
Standard Chain Additional Fittings



R Clip
ea - RBA502



2 part Chain breakaway
ea - RBA503 request chain separately
The top chain, which passes through the mechanism is only available as a white plastic chain.



Chain Breakaway - 1:1 Ratio
ea - VBA106



For Touch and Close tape see page 253



Bead Chain Continuous Fixed Loop



White Plastic Metal

0.4mtr	= 0.20mtr drop	CHAIN20	METAL20
2mtr	= 1mtr drop	CHAIN200	METAL200
2.5mtr	= 1.25mtr drop	CHAIN250	METAL250
3mtr	= 1.50mtr drop	CHAIN300	METAL300
3.5mtr	= 1.75mtr drop	CHAIN350	METAL350
4mtr	= 2mtr drop	CHAIN400	METAL400



Standard chain operated headrail system chain tensioner. - RBA463 supplied with the headrail

Standard Chain Operated Headrail System make up guide

This Standard Chain Operated headrail system is compliant to BA EN 13120:2009+a1:2014 using the following methods of make up:

Please remember that these methods only apply when the distance between the rod pockets is more than 20cm. Breakaways on the cords at the back of the blind are not needed for blinds made with rod pockets 20cm apart or less.

Version1:



Components used:

- Eyelets - code 542420
- Toggles - code RBA455
- ROUND BAR

Eyelet Method:

The bottom toggle must be attached to the blind, we suggest a loop of blind cord sewn into the rod pocket and then knotted above the sewing line. This prevents the toggle from falling off the blind and becoming a choking hazard.

The cord that runs down the length of the blind through the eyelets must not be knotted at the bottom. This enables the cord to pass through the eyelets when 6kg of weight is applied.

Version2:



Components used:

- Ring Clip - code RBA457
- Toggles - code RBA455
- ROUND BAR

Ring Clip Method:

This method can either be created with roman blind tape PRT672 or by making rod pockets in the lining of the blind.

In this instance the cord that runs through the ring clips must be knotted at the bottom, after it has passed through the toggle. This prevents the toggle from becoming a choking hazard when the clips come apart if 6kg of weight is applied in the loops.

Version3:



Components used:

- Tape Clip - RBA458
- Toggles - code RBA455
- ROUND BAR
- Roman blind tape - 672

Tape Clip Method:

The part of the clip that the cord/ tape runs through will come apart from the main clip is a weight on 6kg is applied to the loops at the back of the blind. The cord must then pass through the toggle and be knotted so that the toggle does not fall off and become a choking hazard.



Version4:



Components used:

- Toggles supplied with the headrail - code RBA455
- ROUND BAR (not supplied with the headrail)
- Rings - supplied with the headrail - code RBA207
- Cable ties - supplied with the headrail

This is the standard method and the cable ties, toggles and rings are supplied in the pack.

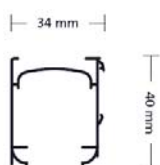
Rings are sewn into the rod pocket or tape and the cord runs through them the length of the blind. On the bottom ring a cable tie is used to attach the toggle to the ring. The cable tie and the cord pass through the toggle.

The cord must not be knotted at the bottom because it needs to pass through all of the rings and the toggle if a weight of 6kg is applied to the loops at the back of the blind.

For blind make up components please see pages 219 - 220

Please remember when fitting the blind operating chain must not be less than 1.5cm from the floor without a breakaway. Our ready made blind systems are supplied with a 1mtr chain drop. If your blind needs a shorter or longer drop please order separately.

Ultra M2M Chain Operated Headrail System



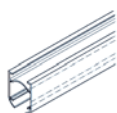
Certificate of compliance available on request.



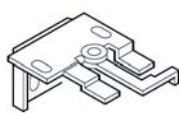
All head rails are supplied with the relevant blind safety labels. These are also sold separately - see our price list for more information.

- Made to measure headrail system - made to bespoke requirements.
- Streamlined headrail with encased mechanisms
- Velcro fascia for easy attachment of blind
- Maximum blind drop 3.5mtr
- 1:1 ratio max 6kg or 1:4 ratio max 10kg
- 34mm projection including brackets.
- **Made to measure only** sizes between 75cm - 3mtr
- Alternative colour cord options 3.5mtr packs
- Also available with crank operation pg 213 and motorised pg 214
- White chain supplied as standard with invisible chain breakaway suitable for 1:1 & 1:4 gearing - enabling the chain to drop to 60cm from the floor.
- Optional metal chain supplied with chain breakaway VBA106 suitable for 1:1 gearing only or may be supplied with RBA503 suitable for 1:1 & 1:4 gearing. Both enable the chain to drop to 60cm from the floor.
- Maximum chain length with invisible chain breakaway is 250cm drop (5mtr loop)
- Continuous chain 2 part breakaway also available
- See page 215 for blind make up options - headrail is supplied with components to make up version 4 in the make up guide with the exception of the round bar.
- **Please ensure you provide an installation height when ordering.**

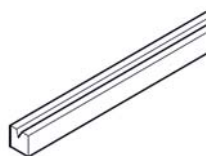
Ultra M2M Chain Additional Fittings



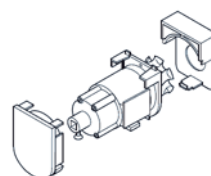
Headrail Only
5.8mtr - VBA100



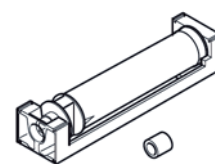
Swivel Bracket
ea - VBA118



Square Axis Bar - VBA101



Control Unit
1:1 Ratio - VBA102
1:4 Ratio - VBA103



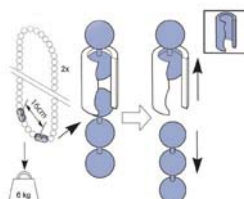
Spool - excluding cord
VBA104



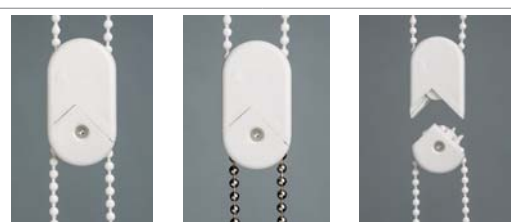
For Touch and Close tape see page 253



R Clip
ea - RBA502



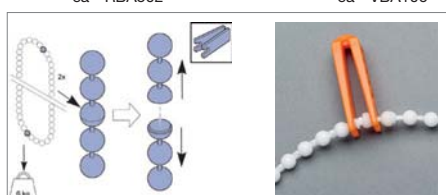
Chain Breakaway - 1:1 Ratio
ea - VBA106



2 part Chain breakaway
ea - RBA503 request continuous chain separately
The top chain, which passes through the mechanism is only available as a white plastic chain.



Cord - Colours available: 3.5mtr
VBACORD1 - White
VBACORD2 - Cream
VBACORD3 - Sand
VBACORD4 - Black
VBACORD5 - Grey
VBACORD6 - Silver



Endless Chain with invisible breakaway - 1:1 and 1:4

1 mtr	= 0.50 mtr drop	VBA109
1.5mtr	= 0.75 mtr drop	VBA110
2.0mtr	= 1 mtr drop	VBA111
2.5mtr	= 1.25 mtr drop	VBA112
3.0mtr	= 1.5 mtr drop	VBA113
3.5mtr	= 1.75 mtr drop	VBA114
4.0mtr	= 2 mtr drop	VBA115
4.5mtr	= 2.25 mtr drop	VBA116
5.0mtr	= 2.50mtr drop	VBA117



Bead Chain Continuous Loop

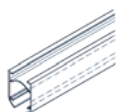
		White Plastic	Metal
0.4mtr	= 0.20mtr drop	CHAIN20	METAL20
2mtr	= 1mtr drop	CHAIN200	METAL200
2.5mtr	= 1.25mtr drop	CHAIN250	METAL250
3mtr	= 1.50mtr drop	CHAIN300	METAL300
3.5mtr	= 1.75mtr drop	CHAIN350	METAL350
4mtr	= 2mtr drop	CHAIN400	METAL400

Ultra M2M Crank Operated Headrail System

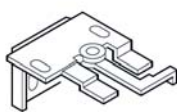
- Streamlined headrail with encased mechanisms
- Velcro fascia for easy attachment of blind
- Maximum blind drop 3.5mtr
- 1:4 ratio max 10kg - 1:1 ratio max 8kg
- 34mm projection including brackets.
- **Made to measure only** sizes between 75cm - 3mtr
- Alternative colour cord options 3.5mtr pack
- Ultra light control
- Made to measure crank length - up to 3mtr - in three parts for quick and adjustable assembly.
- See page 215 for blind make up options - headrail is supplied with components to make up version 4 in the make up guide with the exception of the round bar.



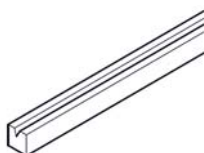
Ultra M2M Chain Additional Fittings



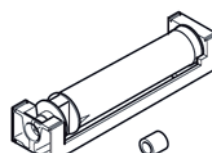
Headrail Only
5.8mtr - VBA100



Swivel Bracket
ea - VBA118



Square Axis Bar - VBA101



Spool - excluding cord
VBA104



For Touch and Close tape see
page 253



Wall Clip for Crank - VBA128



A



B



C

A - Crank Handle Rod (3mtr) - VBA121
B - Crank Handle - VBA122
C - Hook for Crank Handle - VBA123

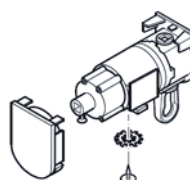


Clip for Crank Handle - VBA124



Cord - Colours available: 3.5mtr
VBACORD1 - White
VBACORD2 - Cream
VBACORD3 - Sand
VBACORD4 - Black
VBACORD5 - Grey
VBACORD6 - Silver

Uplift Gearing Component



Control Unit
1:1 Ratio - VBA120
1:4 Ratio - VBA119



Crank Handle VBA301

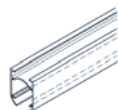
Ultra M2M Motorised headrail system

somfy Building happiness

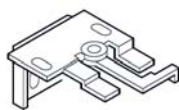
- Streamlined headrail with encased mechanisms
- Velcro fascia for easy attachment of blind
- Maximum blind drop 3.5mtr
- Blinds up to 6kg
- 34mm projection including brackets.
- **Made to measure only** sizes between 75cm - 3mtr
- Alternative colour cord options 3.5mtr packs
- Somfy compatible 12V side and centre
- Choose from battery or mains power and choose control options.
- See page 215 for blind make up options - headrail is supplied with components to make up version 4 in the make up guide with the exception of the round bar.



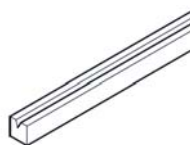
Ultra M2M Motor Additional Fittings



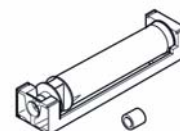
Headrail Only
5.8mtr - VBA100



Swivel Bracket
ea - VBA118



Square Axis Bar - VBA101



Spool - excluding cord
VBA104



For Touch and Close tape see page
253

Ultra Electric Uplift - VBA302



Motor system includes:

End Cap - VBA129
Retaining Washer with screw - VBA130
Tilt & Lift 25RTS Motor - VBA310

Faber Softline Motor Adapters - VBA311
5mm Square long shaft adapters - VBA312



12V AC/DC Power Supply - VBA319



Cord - Colours available: 3.5mtr
VBACORD1 - White
VBACORD2 - Cream
VBACORD3 - Sand
VBACORD4 - Black
VBACORD5 - Grey
VBACORD6 - Silver



Battery Tube
8 Battery tube for lithium batteries - VBA314
10 battery tube for NimH batteries - VBA315

8 pack of lithium batteries - VBA316
10 pack of NimH batteries - VBA317

Wall charger for NimH Batteries - VBA320



Solar Panel Kit - VBA318
Contains: Solar panel, battery holder (for 10
NimH batteries), 4 panel mounting brackets, 2
battery clips, Y harness & glass mount adhesive
Batteries not included.



Smoove RTS Switch - VBA321
Wireless - wall mounted battery control unit.
No cabling required.



Telis 1 RTS Remote - VBA322
remote control to manage
1 applications or 1 group of
applications



Telis 4 RTS Remote - VBA323
remote control to manage from 1 up to 5
applications or 5 groups of applications.



Telis 16 RTS Remote - VBA324
remote control to manage up to 16 groups of
applications. With easy to read information on
display.



Telis 6 Chronis RTS Remote - VBA327
remote control to manage up to 6 groups
with time programming. Manual / Automatic
modes combined with centralisation and
clock function.

Ultra M2M Headrail System - make up guide.

This Ultra headrail system is compliant to BA EN 13120:2009+a1:2014 using the following methods of make up:

Please remember that these methods only apply when the distance between the rod pockets is more than 20cm. Breakaways on the cords at the back of the blind are not needed for blinds made with rod pockets 20cm apart or less.

Version1:



Components used:

- Eyelets - code 542420
- Toggles - code RBA455
- ROUND BAR

Eyelet Method:

The bottom toggle must be attached to the blind, we suggest a loop of blind cord sewn into the rod pocket and then knotted above the sewing line. This prevents the toggle from falling off the blind and becoming a choking hazard.

The cord that runs down the length of the blind through the eyelets must not be knotted at the bottom. This enables the cord to pass through the eyelets when 6kg of weight is applied.

Version2:



Components used:

- Ring Clip - code RBA457
- Toggles - code RBA455
- ROUND BAR

Ring Clip Method:

This method can either be created with roman blind tape PRT672 or by making rod pockets in the lining of the blind.

In this instance the cord that runs through the ring clips must be knotted at the bottom, after it has passed through the toggle. This prevents the toggle from becoming a choking hazard when the clips come apart if 6kg of weight is applied in the loops.

Version3:



Components used:

- Tape Clip - RBA458
- Toggles - code RBA455
- ROUND BAR
- Roman blind tape - 672

Tape Clip Method:

The part of the clip that the cord/ tape runs through will come apart from the main clip is a weight on 6kg is applied to the loops at the back of the blind. The cord must then pass through the toggle and be knotted so that the toggle does not fall off and become a choking hazard.



Version4:



Components used:

- Toggles supplied with the headrail - code RBA455
- ROUND BAR (not supplied with the headrail)
- Rings - supplied with the headrail - code RBA207
- Cable ties - supplied with the headrail

This is the standard method and the cable ties, toggles and rings are supplied in the pack.

Rings are sewn into the rod pocket or tape and the cord runs through them the length of the blind. On the bottom ring a cable tie is used to attach the toggle to the ring. The cable tie and the cord pass through the toggle.

The cord must not be knotted at the bottom because it needs to pass through all of the rings and the toggle if a weight of 6kg is applied to the loops at the back of the blind.

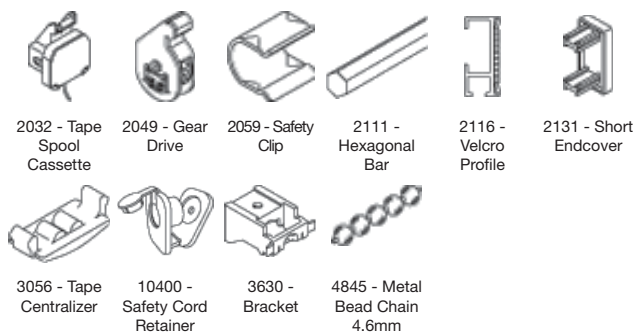
Please remember when fitting the blind operating chain must not be less than 1.5cm from the floor without a breakaway. Our ready made blind systems are supplied with a 1mtr chain drop. If your blind needs a shorter or longer drop please order separately.

SYSTEM 2020

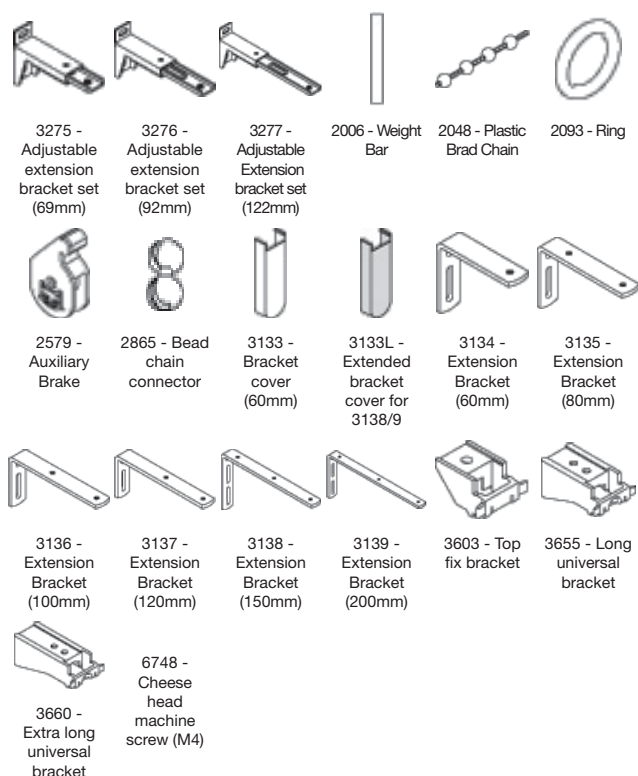


- Supplied assembled
- Simple to operate and robust bead chain operation
- Blind stops at any required height without slippage or the need to lock off.
- Smooth finger touch operation.
- Made to measure
- Easy wall or ceiling fix
- Easy removal of blind for washing.
- Maximum width 2.5mtr
- Maximum height 3.0mtr
- Suitable for blinds up to a maximum of 3kg
- Compliant with child safety legislation (EN13120)
- For compliant blind make up components see page 218

Standard Accessories



Optional Accessories

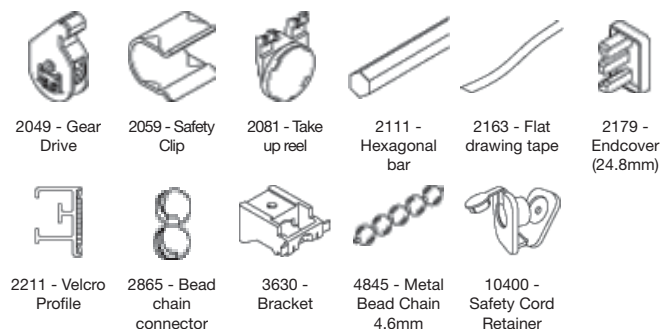


SYSTEM 2120

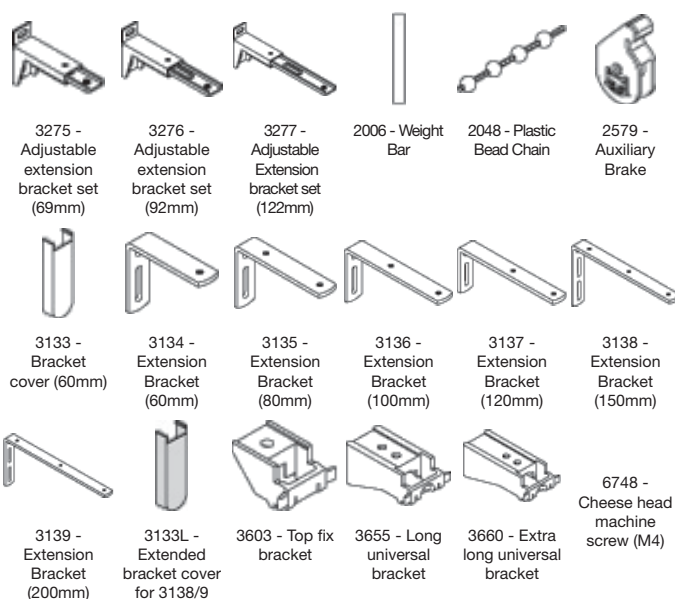


- Supplied assembled
- Maximum width 4mtr
- Maximum drop 6mtr
- Maximum weight 8kg (max 1.25kg per spool)
- The endless bead chain operation makes 2120 ideal for blinds which are large or inaccessible or where trailing cords are not suitable.
- Left or right hand pull.
- No locking off required - blind stops without slipping at any required position.
- Ceiling or wall fixed.
- Compliant with child safety legislation (EN13120)
- For compliant blind make up components see page 218

Standard Accessories



Optional Accessories



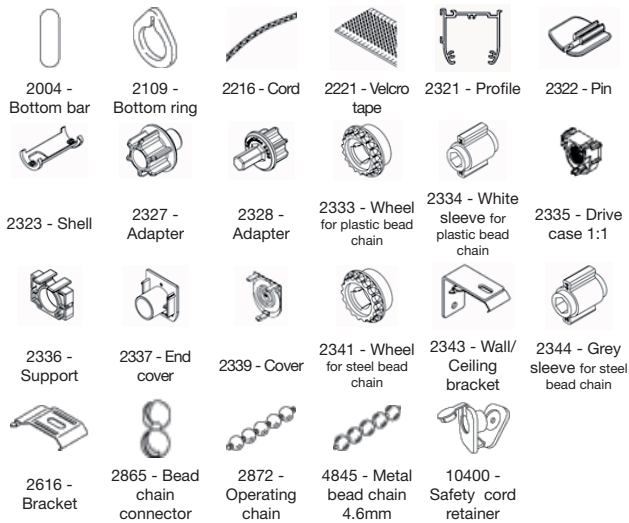


SYSTEM 2320

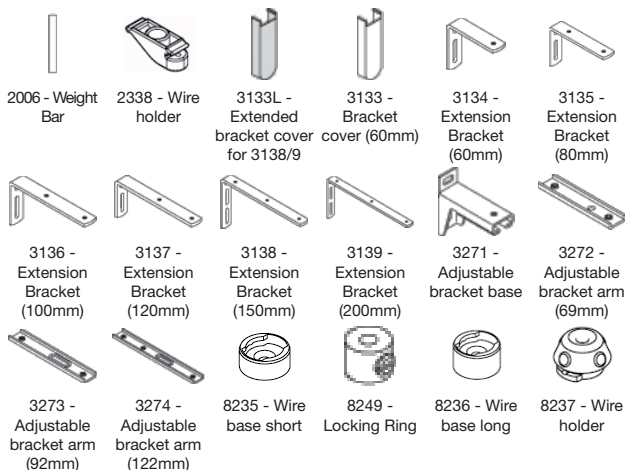


- Chain operated roman blind system for residential and contract applications
- Suitable for small to medium size applications
- New wind up technique
- Very elegant appearance as all workings are hidden in a smart cassette
- Easy cleaning/maintenance through cord release mechanism
- Extremely smooth and easy operation
- Blind stops at any height without slippage
- Left or right hand operation
- Easy ceiling or wall fix.
- Side guide operation available
- Plastic or steel operating chain options available
- Maximum width 3.0mtr - Maximum height 3.0mtr
- Maximum weight 2.5kg
- Compliant with child safety legislation (EN13120)
- For compliant blind make up components see page 218

Standard Accessories



Optional Accessories

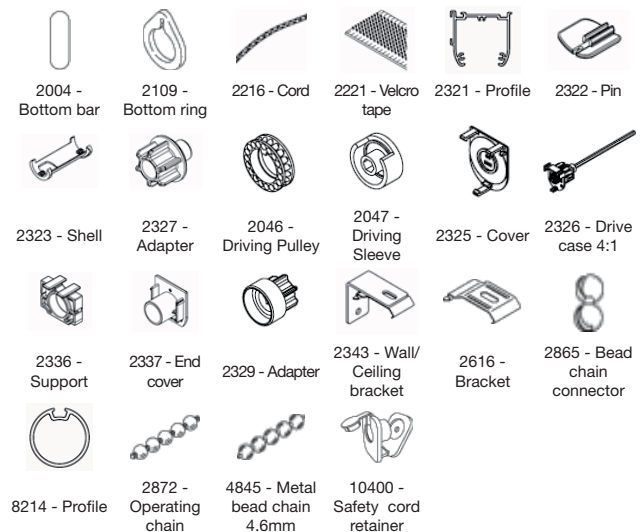


SYSTEM 2330

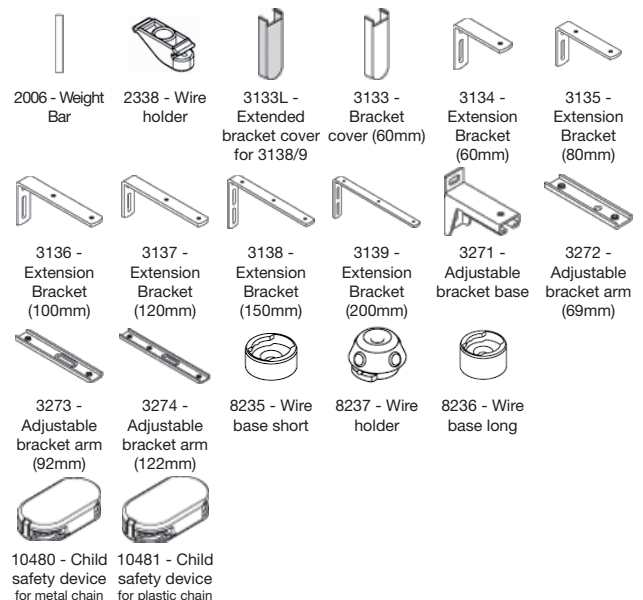


- Chain operated (4:1 geared) roman blind system for residential and contract applications
- Suitable for small to medium sized applications
- Elegant appearance
- Easy cleaning/maintenance through new cord release mechanism
- Extremely smooth and easy operation even in large dimensions
- Lift or right hand operation
- Maximum weight 4.5kg
- Maximum width 3.0mtr
- Maximum drop 3.0mtr
- Wall or ceiling fix
- Side guide option available
- Plastic or steel chain options available
- Compliant with child safety legislation (EN13120)
- For compliant blind make up components see page 218

Standard Accessories

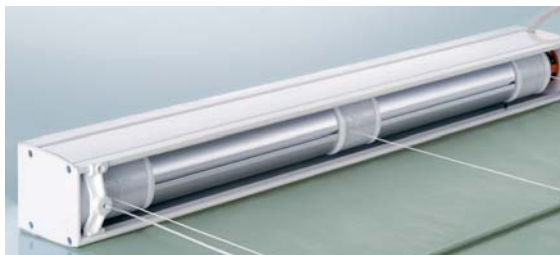


Optional Accessories



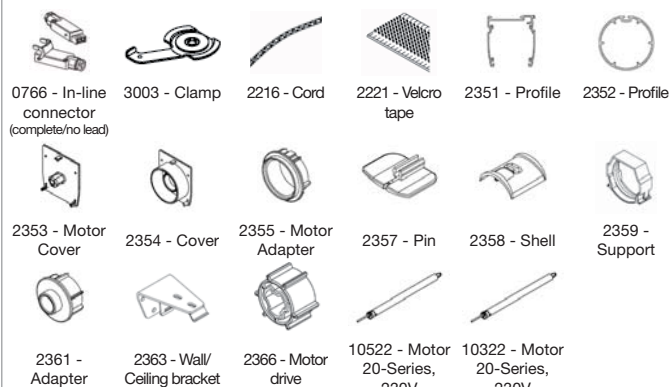


SYSTEM 2350

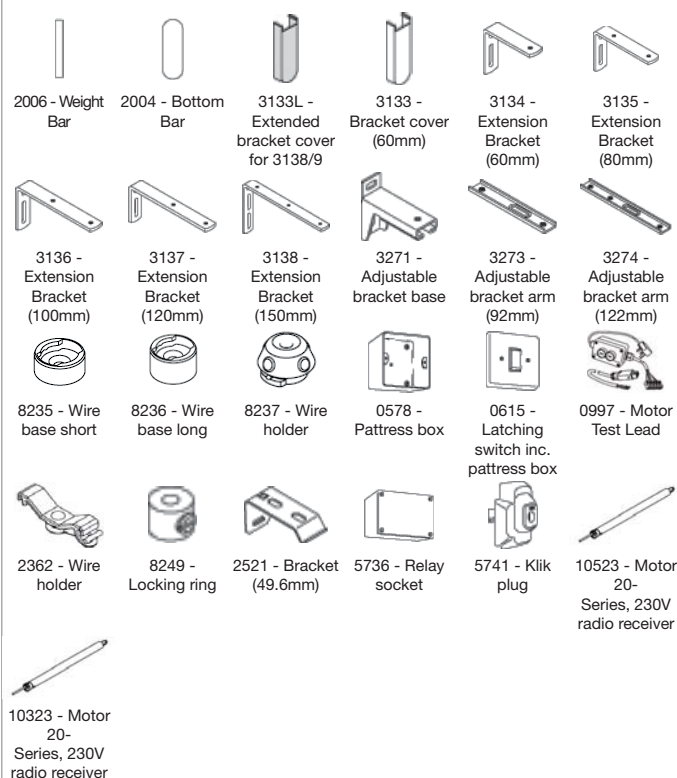


- Electrically operated roman blind system for residential and contract applications
- Very elegant appearance
- A revolutionary cord release mechanism combined with velcro tape fixing makes maintenance and cleaning of fabrics very easy
- Maximum weight 15kg
- Maximum width 6mtr - Minimum width 0.6mtr
- Maximum drop 6mtr
- Easy ceiling or wall fix
- Motor concealed in headbox
- Can be operated by fixed switch or Silent Gliss radio control system 9940/0450
- Compliant with child safety legislation (EN13120)

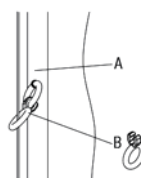
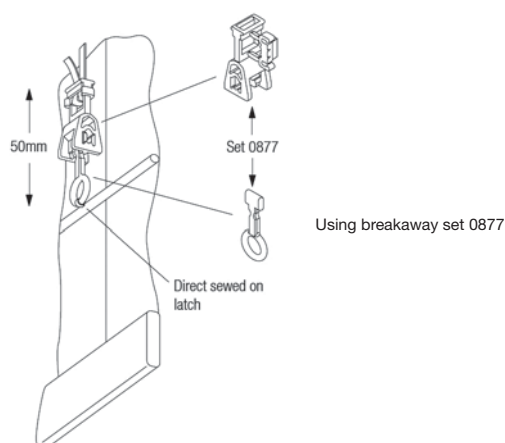
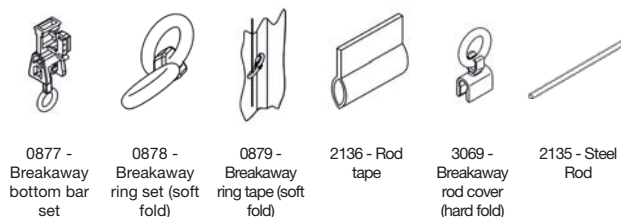
Standard Accessories



Optional Accessories



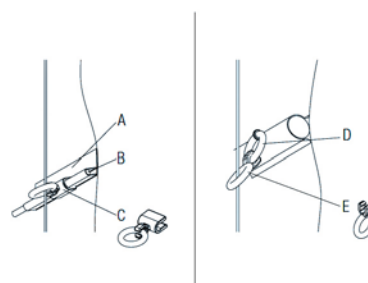
Silent Gliss - Blind Make Up Components



Soft Fold:

A: Breakaway ring tape set 0879
B: Set includes child safety eyelet

NOTE: The breakaway ring set is available without tape (part number 0878)



Hard Fold:

A: Tape 2136
B: Steel rod 2135
C: Child safety eyelet (hard fold 3069)
D+E: Breakaway ring set 0878

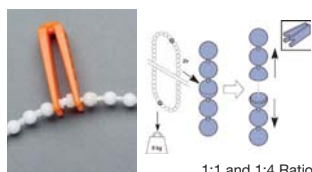
Hollow Rings - Brass and Chrome



Hollow Chrome Rings		
Size	Qty	Part
13mm dia	100	508/C
16mm dia	100	510/C
20mm dia	100	512/C
25mm dia	100	516/C

Hollow Brass Rings		
Size	Qty	Part
13mm dia	200	508
16mm dia	200	510
20mm dia	200	512
20mm dia	20 x 6 carded	PP20
25mm dia	200	516
25mm dia	20 x 4 carded	PP26

Endless Chain with Invisible Breakaway



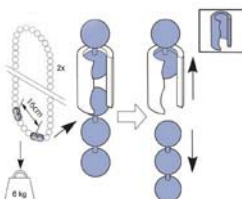
Endless Chain		
Tot. Length	Drop	Part
1 mtr	= 0.50 mtr drop	VBA109
1.5mtr	= 0.75 mtr drop	VBA110
2.0mtr	= 1 mtr drop	VBA111
2.5mtr	= 1.25 mtr drop	VBA112
3.0mtr	= 1.5 mtr drop	VBA113
3.5mtr	= 1.75 mtr drop	VBA114
4.0mtr	= 2 mtr drop	VBA115
4.5mtr	= 2.25 mtr drop	VBA116
5.0mtr	= 2.50mtr drop	VBA117

Austrian/Festoon Blind Rings



9mm Austrian/Festoon Blind Rings		
	Qty	Part
Transparent	10 pks of 20	RBA207/20
Transparent	200	RBA207
White	200	RBA201

Chain Breakaway



Chain Breakaway	
Qty	Part
ea	VBA106

Continuous Chain



Bead Chain Continuous Loop			
Tot. Length	Drop	White Plastic	Metal
0.4mtr	= 0.20 mtr drop	CHAIN20	METAL20
2.0mtr	= 1 mtr drop	CHAIN200	METAL200
2.5mtr	= 1.25 mtr drop	CHAIN250	METAL250
3.0mtr	= 1.5 mtr drop	CHAIN300	METAL300
3.5mtr	= 1.75 mtr drop	CHAIN350	METAL350
4.0mtr	= 2 mtr drop	CHAIN400	METAL400

Chain Breakaway



Chain Breakaway	
Qty	Part
ea	RBA503

Cord Connector Breakaway



Cord Connector	
Qty	Part
ea	RBA500

Chain Tensioner



Chain Tensioner	
Qty	Part
ea	RBA463

Blind Breakaway Hook



Blind Breakaway Hook	
Qty	Part
ea	RBA458

Retainers



Retainers	
	Part
Transparent R Clip	RBA502
Transparent Cleat	RBA501

Cord End Toggle



Cord End Toggle	
Qty	Part
ea	RBA455

Austrian/Festoon Plastic Clips



Austrian/Festoon Plastic Clips

Qty	Part
100 loose	RBA455
20pks of 10	PPR840

Roman Blind Rods



ROMANBAR



CLEARBAR

Roman Blind Rod

PVC 10mm	3mtr	ROMANBAR
Clear 10mm	3mtr	ROMANBAR/C
Clear 4.5mm	3mtr	CLEARBAR

Aluminium Bottom Weight Bar



Aluminium Bottom Weight Bar 25 x 3mm - White

Qty	Part
3mtr	ALUMBAR

Fibreglass Bottom Weight Bar



Fibreglass Bottom Weight Bar 20 x 4mm - White

Qty	Part
3mtr	WEIGHTBAR

Round Bar and Accessories



ROUNDBAR



RBA461



RBA457

Round Bar and Accessories

	Qty	Part
End Covers	50	RBA461
Clear Clip on Ring	100	RBA457
Round Bar - white fibreglass 4mm	3mtr	ROUNDBAR

Roman Blind Cord



Roman Blind Cord

	Qty	Part
1.25mm	200mtr	RBC200

For other cords see page 245



1.20mm Cord

	Qty	Part
White	3.5mtr	VBACORD1
Cream	3.5mtr	VBACORD2
Sand	3.5mtr	VBACORD3
Black	3.5mtr	VBACORD4
Grey	3.5mtr	VBACORD5
Silver	3.5mtr	VBACORD6

Eyelets and Pliers



5mm Eyelets and Pliers

	Qty	Part
Silver Eyelets	500	542420
Gold Eyelets	500	542421
Black Eyelets	500	542416
Pliers - with piercing tool	ea	39090

China Thimbles and Clips



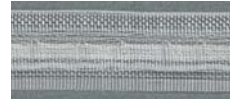
China Thimbles and Clips

Qty	Part
10 sets	G-FCO-8

Blind Tape



672



PRT634



PR102

Blind Tape

	Qty	Part
26mm Ivory (Roman)	100mtr	672
18mm Transparent (Roman)	100mtr	PRT634
22mm Transparent (Austrian/Festoon)	200mtr	PR102

For further information see page 231

Vine Eyes



Brass Vine Eyes

Qty	Part
20 cards of 4	PP21
100 loose	LP21

Screw Eyes



Screw Eyes 40mm

	Qty	Part
Zinc Plated	100	RBA305
Brass Plated	100	RBA308

Roman Blind Rods



Roman Blind Rods 6mm	
Qty	Part
4 x 1.22mm	5500439

Translucent Rods



Translucent Rods 6mm	
Qty	Part
4 x 1.22mm	5500445

Austrian Blind 10mm Rings



Austrian Blind Rings	
Qty	Part
6 packs of 50	3630155
1000 loose	3512080

Brass Cleats



Brass Cleats	
Qty	Part
20 pks of 1	5301029

Chrome Cleats



Chrome Cleats	
Qty	Part
20	5301354

Wooden Acorns



Wooden Acorns	
Qty	Part
40	5301053

Brass Plated Screw Eyes



Screw Eyes	
Qty	Part
100	5301037

Blinds

universal

Slat Cutter for 25mm Blinds



Slat Cutter	
Qty	Part
ea	SVSC.ND

Venetian Blind Cleaner



Blind Cleaner	
Qty	Part
ea	SVVBC.ND

Safety Device and Cord Connector Kit



Safety Device and Cord Connector Kit	
Qty	Part
ea	SBCCRK.ND
100	SBCCRK100.ND

